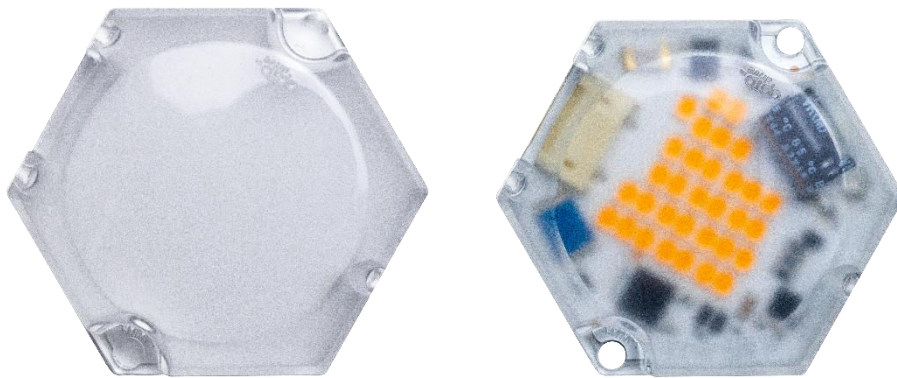




# CLARA AC COVER



## CLARA AC COVER

2W | 4W | 6W | 8W | 10W | 15W

(3<sup>rd</sup> generation)

*A qualified solution to replace and exceed CFL and CDM solutions  
in Downlights or ambient luminaires.*

***No Driver is required!***





## Clara LED Modules:

---

### Versatility Meets High Performance

**Introduction:** The Clara LED modules are designed to meet the needs of various light fittings and luminaires in both professional and commercial settings. With their AC-driven architecture and integrated drivers, these modules are easy to install, durable, and provide superior lighting solutions across diverse environments, from downlights and task lighting to architectural lighting fixtures.

### Advantages of AC Design:

- **Simplified Installation:** The integrated drivers eliminate the need for additional components like external boxes and separate drivers, making them simple to install in production lines.
- **Improved Dimming:** Works seamlessly with standard trailing-edge dimmers, providing smooth, flicker-free dimming.
- **Longevity:** By being connected directly to a heat sink, the built-in driver components are kept within a controlled environment, extending the lifespan of the light engine.

**Dimming and Performance:** With minimal flicker and superior dimming performance, Clara modules ensure a high-quality lighting experience for end users. Their consistent color stability and high light output make them ideal for lighting environments where performance matters, from medical task lights to hotel lobby ambient lighting.





# Clara AC

Document no:  
n/a

Revision:  
1.3

Page:  
Page 3 of 20

Object:  
**Datasheet Clara AC.P.230.xx.zyy-NN.FF**

Author:  
SL

Date:  
2024-10-19

## Content

---

Clara LED Modules:.....	2
Short form Characteristics .....	4
Article number structure.....	5
Parameters of the Lens System .....	8
Parameters of the Light Output.....	10
CCT structure graphical representation .....	12
Electro Optical data .....	13
Lifetime (Calculated).....	14
Verification of Conformity.....	16
Precautions for use .....	17
ROHS III Compliant.....	18





## Short form Characteristics

MODULE CHARACTERISTICS	2W	4W	6W	8W	10W	15W
Power (+/-10% ea.)	2	4	6	8	10	15
Voltage	230V					
Number of LED's	16 (32)	16 (32)	16 (32)	32	32	32
Colour Rendering Index	>Ra90					
Colour temperature	2200K, 2700K, 3000K, 4000K					
Optics	130°					

### MECHANICAL

Module dimension	Ø 48.4 mm					
Diameter lens	n/a					
Height	7.2mm					
Weight	14g					
Assembly holes	2 x 3.8 mm					
Wire connector	CviLux CP04-03SO or JST BH					

### ELECTRICAL

Input voltage range	220-240VAC					
Dimmable	Yes					
Power factor	>0.90					
Total harmonic distortion	< 15%					
Peak inrush current	600mA					
Inrush current duration	< 35µs					
Surge protection	1.5kV					
Burst protection	2kV					
Over temp. protection	150°C					
Energy class 3000K	Please see more details parameters vs article no					

### PHOTOMETRICAL

SDCM (Mac Adam)	3					
SVM	0.5					
PstLM	0.6					

### ENVIRONMENTAL

Temperature range	-30°C to 85°C (Absolute maximum temp Tc 85°C)					
Relative Humidity	10-75%					
Ambient air pressure	500-1060 HPa					

### LIFETIME

Life length L70B10*	50,000 h					
---------------------	----------	--	--	--	--	--

\*Specifications are valid for >Ra90.



## Article number structure

### Clara AC.P.230.24.8yy-NN.FF.C.H

AC	AC= 230VAC, ED=External Driver required, ID=Internal Driver
P	Power (Watt)
V	Voltage: 230VAC
N	Amount of LEDs (standard 16 on 2-6W and 32 on 8-15W)
8	CRI: 8=Ra>80, 9=Ra>90
YY	CCT: 27 =2700K, 30 =3000K, 40 =4000K
NN	Code for Cover: 130 and D for Diffused cover
FF	Flicker free according to EPREL
C	MIL 46058C Silicon Conformal Coating (Option)
H	Heat PAD

## Ordering data

### Packaging Information Clara AC 24-LED

Description	Qty (pcs)	Dimension (cm)			GW (kg)
		Length	Width	Height	
Inner Box	60	35,6	22,7	9,6	
Outer Box	480	46,5	37,5	39,6	13,4



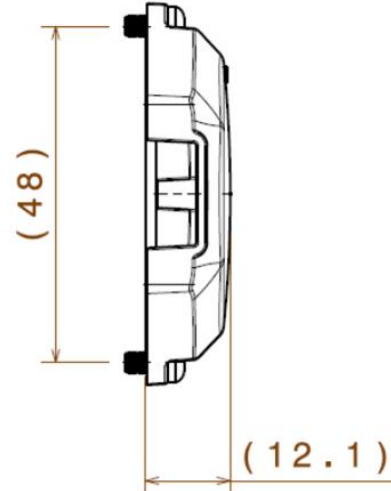
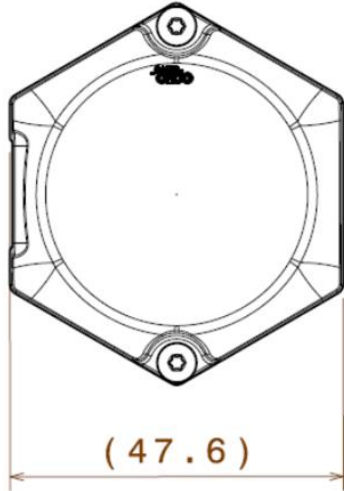
Parameters vs. Article no

ARTICLE NAME	POWER	CURRENT	LEDS	CRI	CCT	LENS	LUMEN		ENERGY CLASS*
							25°	65°	
Clara AC.2.230.16.922-130.FF	2	230	16	90	2200	130	175	160	F
Clara AC.2.230.16.927-130.FF	2	230	16	90	2700	130	190	180	E
Clara AC.2.230.16.930-130.FF	2	230	16	90	3000	130	220	210	E
Clara AC.2.230.16.940-130.FF	2	230	16	90	4000	130	225	215	E
Clara AC.4.230.16.922-130.FF	4	230	16	90	2200	130	350	320	F
Clara AC.4.230.16.927-130.FF	4	230	16	90	2700	130	440	410	E
Clara AC.4.230.16.930-130.FF	4	230	16	90	3000	130	470	450	E
Clara AC.4.230.16.940-130.FF	4	230	16	90	4000	130	500	480	E
Clara AC.6.230.16.922-130.FF	6	230	16	90	2200	130	530	480	F
Clara AC.6.230.16.927-130.FF	6	230	16	90	2700	130	660	620	E
Clara AC.6.230.16.930-130.FF	6	230	16	90	3000	130	700	660	E
Clara AC.6.230.16.940-130.FF	6	230	16	90	4000	130	740	700	E
Clara AC.8.230.32.922-130.FF	8	230	32	90	2200	130	650	600	F
Clara AC.8.230.32.927-130.FF	8	230	32	90	2700	130	840	800	E
Clara AC.8.230.32.930-130.FF	8	230	32	90	3000	130	900	850	E
Clara AC.8.230.32.940-130.FF	8	230	32	90	4000	130	950	910	E
Clara AC.10.230.32.922-130.FF	10	230	32	90	2200	130	780	720	F
Clara AC.10.230.32.927-130.FF	10	230	32	90	2700	130	1050	1010	E
Clara AC.10.230.32.930-130.FF	10	230	32	90	3000	130	1080	1020	E
Clara AC.10.230.32.940-130.FF	10	230	32	90	4000	130	1130	1070	E
Clara AC.15.230.32.922-130.FF	15	230	32	90	2200	130	1200	1000	F
Clara AC.15.230.32.927-130.FF	15	230	32	90	2700	130	1550	1500	E
Clara AC.15.230.32.930-130.FF	15	230	32	90	3000	130	1650	1600	E
Clara AC.15.230.32.940-130.FF	15	230	32	90	4000	130	1700	1650	E
Clara AC.2.230.16.922-D.FF	2	230	16	90	2200	IP65	140	125	F
Clara AC.2.230.16.927-D.FF	2	230	16	90	2700	IP65	170	160	E
Clara AC.2.230.16.930-D.FF	2	230	16	90	3000	IP65	175	165	E
Clara AC.2.230.16.940-D.FF	2	230	16	90	4000	IP65	180	170	E
Clara AC.4.230.16.922-D.FF	4	230	16	90	2200	IP65	280	250	F
Clara AC.4.230.16.927-D.FF	4	230	16	90	2700	IP65	340	310	E
Clara AC.4.230.16.930-D.FF	4	230	16	90	3000	IP65	350	315	E
Clara AC.4.230.16.940-D.FF	4	230	16	90	4000	IP65	360	330	E
Clara AC.6.230.16.922-D.FF	6	230	16	90	2200	IP65	420	390	F
Clara AC.6.230.16.927-D.FF	6	230	16	90	2700	IP65	500	470	E
Clara AC.6.230.16.930-D.FF	6	230	16	90	3000	IP65	530	480	E
Clara AC.6.230.16.940-D.FF	6	230	16	90	4000	IP65	550	500	E
Clara AC.8.230.32.922-D.FF	8	230	32	90	2200	IP65	590	540	F
Clara AC.8.230.32.927-D.FF	8	230	32	90	2700	IP65	750	710	E
Clara AC.8.230.32.930-D.FF	8	230	32	90	3000	IP65	790	750	E
Clara AC.8.230.32.940-D.FF	8	230	32	90	4000	IP65	830	780	E
Clara AC.10.230.32.922-D.FF	10	230	32	90	2200	IP65	730	670	F
Clara AC.10.230.32.927-D.FF	10	230	32	90	2700	IP65	930	880	E
Clara AC.10.230.32.930-D.FF	10	230	32	90	3000	IP65	980	930	E
Clara AC.10.230.32.940-D.FF	10	230	32	90	4000	IP65	1030	980	E
Clara AC.15.230.32.922-D.FF	15	230	32	90	2200	IP65	730	670	F
Clara AC.15.230.32.927-D.FF	15	230	32	90	2700	IP65	930	880	E
Clara AC.15.230.32.930-D.FF	15	230	32	90	3000	IP65	980	930	E
Clara AC.15.230.32.940-D.FF	15	230	32	90	4000	IP65	1030	980	E

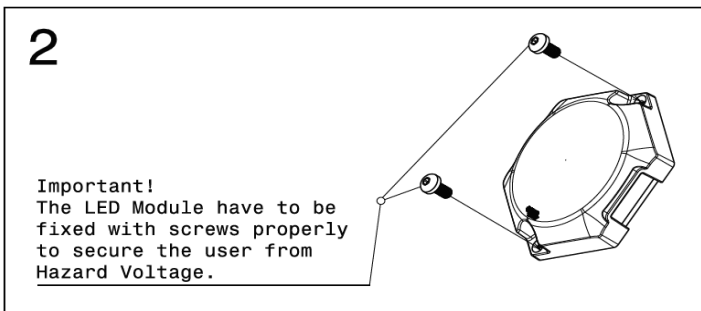
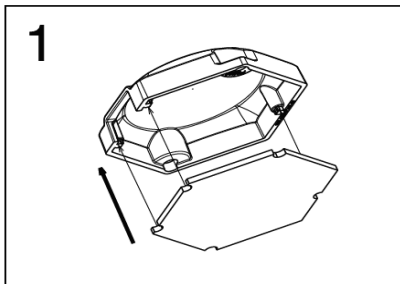
\*EPREL are measured without lens, Energy Class E are to be over 110 lm/W



Dimensions LED Module



Mounting and de-mounting instructions



We recommend maximum torque of 0.2 Nm to tighten the screws.

Never connect or disconnect the LED module with the power ON. Read the information under "Precautions for use" before handling the device.



## Clara AC

Document no:  
n/a

Revision:  
1.3

Page:  
Page 8 of 20

Object:  
**Datasheet Clara AC.P.230.xx.zyy-NN.FF**

Author:  
SL

Date:  
2024-10-19

### Wiring diagrams

See separate wiring diagram documentation.

Article number	Article name	Length
102877	Wire AC 100	100 mm*
103527	Wire AC 220	220 mm*
<b>101913</b>	<b>Wire AC 450</b>	<b>450 mm</b>
103222	Wire AC 600	600 mm*

\*Available on request

### Conformal Coating

We improve the life time of the LED module by attaching conformal coating. With Silicone conformal coating we get protection against moisture and atmospheric containment. It is only attached over the solder joints at the components, never over the whole component or LED. It will not affect the light output.

Add a C in the end of the article number to get conformal coating see details in - Article Number Structure.

## Parameters of the Lens System

The lens system is mounted and fixated onto the PCB with a double press-fit. The light parameters are according to the following:

VERSION	VIEWING ANGLE	FWHM ANGLE
CLARA COVER	130°	±65°

Versions that are under development







## Clara AC

Document no:  
n/a

Revision:  
1.3

Page:  
Page 9 of 20

Object:  
Datasheet Clara AC.P.230.xx.zyy-NN.FF

Author:  
SL

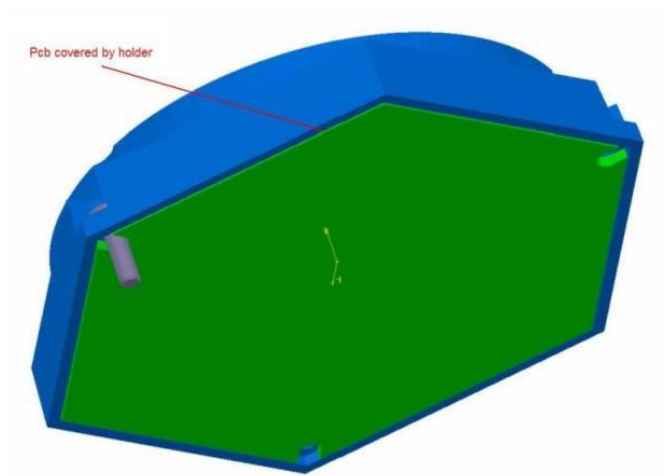
Date:  
2024-10-19

### Thermal information

The thermal area (green) should be properly connected to an even and fine surface of a heat sink. Without this arrangement the unit will be overheated and will not be able to survive.

### Maximum Temperature

Secure the temperature in your application not to exceed 85°C. Read more in the section “Measurement control”.





## Parameters of the Light Output

Warm White

*Electro-Optical characteristics LED module at  $I_F=50mA$ , 230VAC,  $T_C=25^\circ C$*

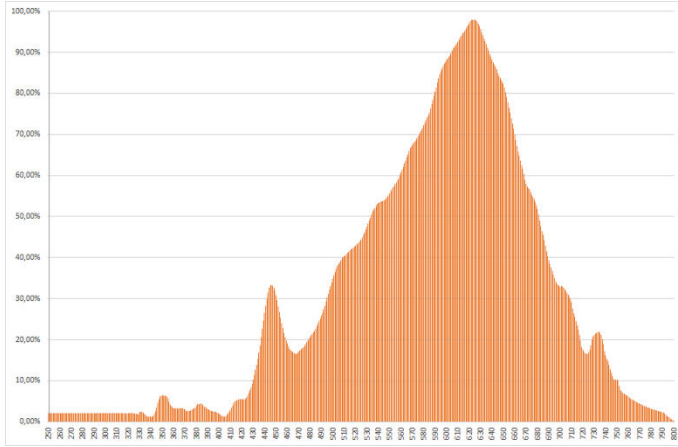
Parameter		Symbol	Value			Unit
			Min	Typ	Max	
Luminous Flux	2W			220		Lm
	4W			440		Lm
	6W			660		Lm
	8W			880		Lm
	10W			1100		Lm
	12W			1320		Lm
	15W			1650		Lm
Correlated Colour Temperature	27*(2)	CCT		2700		K
	30*(2)	CCT		3000		K
	40*(2)	CCT		4000		K
CRI		R <sub>a</sub>	90	94	-	-
Power	2W version	P <sub>o</sub>	1.8	2	2.1	W
	4W version	P <sub>o</sub>	3.6	4	4.2	W
	6W version	P <sub>o</sub>	5.4	6	6.3	W
	8W version	P <sub>o</sub>	7.2	8	8.4	W
	10W version	P <sub>o</sub>	9.0	10	10.5	W
	12W version	P <sub>o</sub>	10.8	12	12.6	W
	14W version	P <sub>o</sub>	12.6	14	14.7	W
15W version	P <sub>o</sub>	13.5	15	15.8	W	

(2) See detailed information in chapter "Binning structure graphical representation"

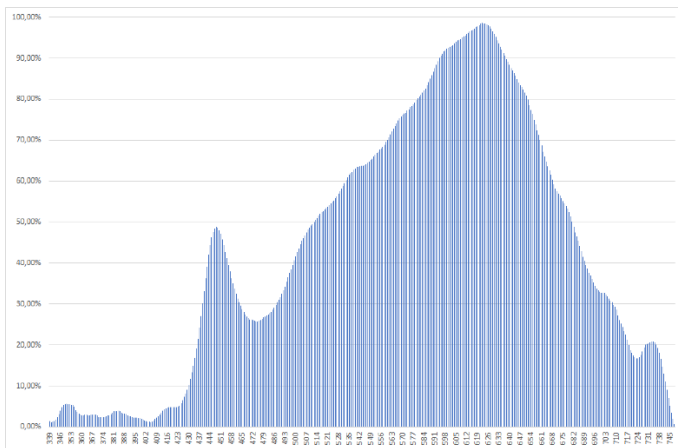


### Colour Spectrum

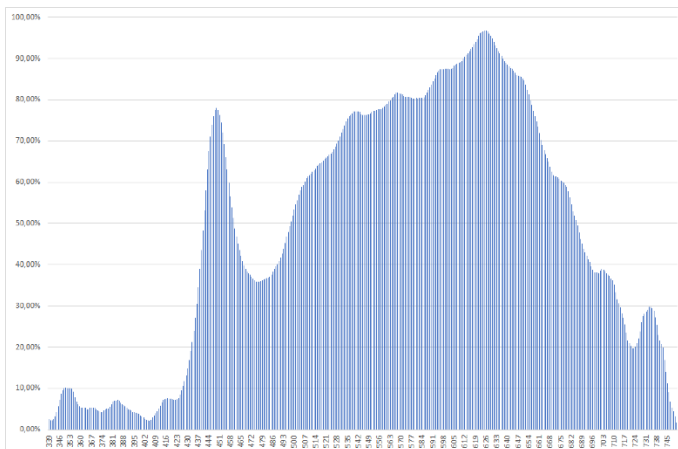
2700K



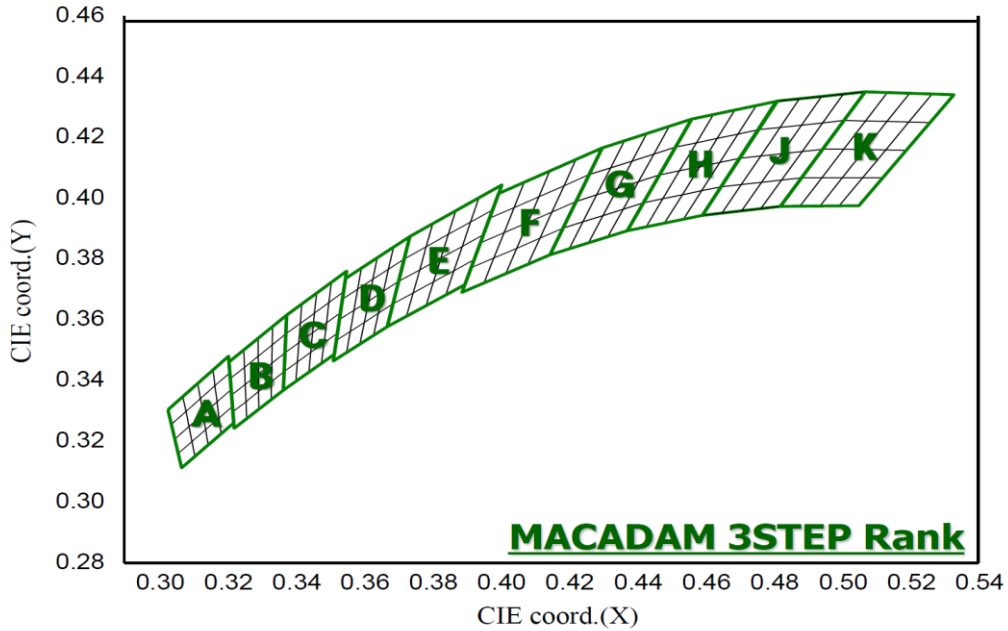
3000K



4000K



## CCT structure graphical representation



\* Note that the Blue boxes represent Energy Star Rank

Short form in diagram	Colour Code	CCT
K	22	2200K
H	27	2700K
G	30	3000K
E	40	4000K

### Colour Rendering Index (CRI)

CRI Code	CRI (min) Ra
8	>80
9	>90

### Short form letters for CCT (K)

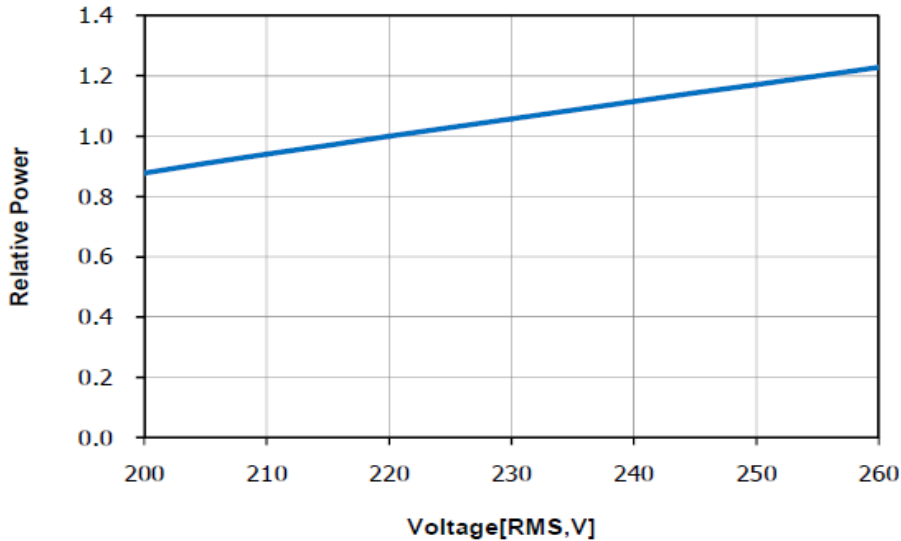
Colour Code	CCT
22	2200K
27	2700K
30	3000K
40	4000K



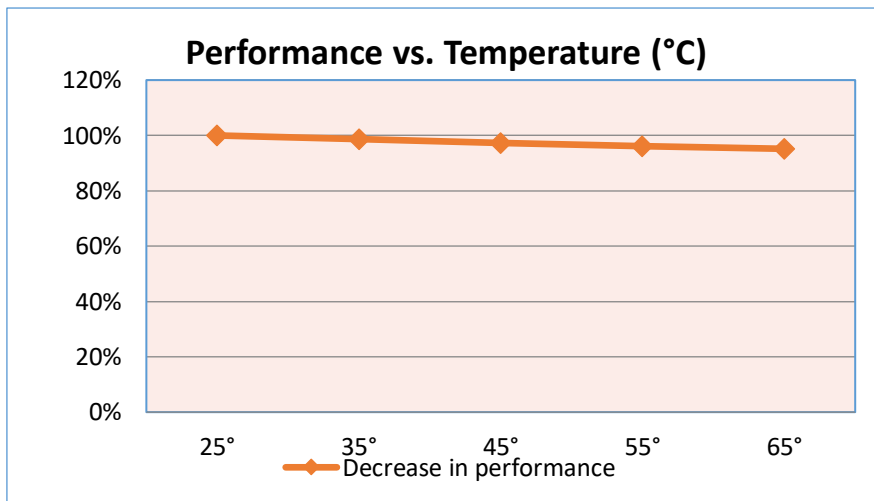
## Electro Optical data

### Current vs. Voltage

*With increasing voltage the light output and the heat increases.*



### Temperature Characteristics

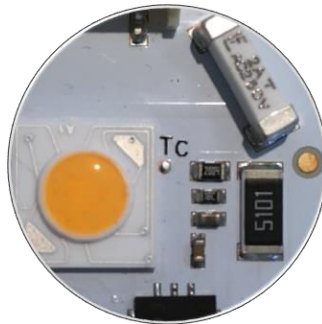


Consider the thermal capabilities of where the LED module is to be fitted. The temperature is an important factor for light output as well as for long time light output degradation.

## Lifetime (Calculated)

### Measurement points

When the measurement takes place you verify that the temperature on the marked measurement points is satisfying. Pending on the result you know what lifetime to expect from the module. This step will be implemented after the heat sink has been connected properly!



The lifetime is calculated at the maximum temperature recommended at the Tc (measuring point). It is important not to exceed this recommendation.

### Projected lifetime based on TM-21

The power load used with the LED module is according to the “lumen maintenance projection”. It is a LM80 projected lifetime based on discreet LEDs tested in the stated temperature environment at a 30mA power load.

	55°C	65°C	75°C	85°C
<b>L70B10</b>	>50 000h	>50 000h	>50 000h	>50 000h
<b>L80B10</b>	>50 000h	>47 000h	>38 000h	>33 000h
<b>L90B10</b>	28 000h	24 000h	20 000h	18 000h



## Measurement Control

The recommended maximum value is 85°C on Tc or measuring point. If this value is exceeded, we cannot guarantee the function and the lifetime of the product. The purpose of the measurement is to control the Junction (Tj) temperature of the LED and also in order to control the performance on the complete setup. By measuring the junction temperature (Tj) the average lifetime of the product is known. Our general recommendation is to keep the temperature on Tc65°C to manage all variations.

*The thermal connection is measured in temperature vs. Power.*

## Maximum Temperature

Secure the temperature in your application not to exceed 85°C. Read more in the section “Measurement control”.



## Verification of Conformity

The module are under testing at Intertek Semco according to IEC 62031.

SAFETY (LVD)	IEC 62031:2008	
SURGE	IEC 61000-4-5	1 kv
Fast transient BURST	IEC 61000-4-5	2 kv
ESD*	IEC 61000-4-2	8 kv Air discharge 4 kv Contact discharge
Radio Disturbance	IEC 55015:2006 + A1:2007 + A2:2009	
Photo Biological Safety	IEC 62471:2008	
Flicker	IEC 61547	N/A

\* Please consult the document ESD standards on Optodrive ED, ID and AC

### Production Setup

Production in accordance with IPC-6012-B and IPC-A-600G class 2

The LED Module is in accordance to EU Directive for ROHS

The bare PCB is isolation tested with 3000VDC/10mA for 10 seconds

### PCB Material Setup

In all questions regarding the bare PCB please use “Material Data sheet Optodrive” as a guideline.

### Light fitting

Light fitting standard according to EN/IEC-60598-1 production control specifications function test. The insulation test of 500Vdc should be performed 1s with min 2MΩ. No dielectric test should be performed.

### IEC Protection Classes

The Clara Optodrive module is designed to be built in directly to a Class I fixture.

For Class II fixture use, an electrical insulating pad is needed between the module and the fixture. The pad needs to be minimum 2.5mm wider than the module in all directions; insulating screws such as nylon or plastic must be used when assembling the module to the fixture.





## Precautions for use

---

- This device should not be used in any type of fluids such as water, oil, organic solvent etc.
- When cleaning is required, use only water together with mild soap on the outside of the lens. Cleaning inside of the LED module is strictly prohibited.
- The appearance and specifications of the product may be modified for improvement without notice.
- Long time exposure of sunlight or occasional UV exposure will cause lens discoloration.
- Opening of the LED module is prohibited due to risk of EMC, dust, grease and other exposures that will damage it.
- The LED Module should always be mounted to a proper heat sink before it's connected with its proper leads.

### Handling in regards to static electricity

- The Optodrive products have integrated circuits (IC) on board that may be damaged if exposed to static electricity. Please handle the products only while using equipment that prevents static electricity. Do not handle them without having ESD protection.
- The Optodrive products are not be installed into the end product without proper ESD protection.
- Optodrive LED Modules meet IEC61547:2009 and IEC61000-4-2. We recommend the light fixture manufacturer to take the mentioned standards under consideration.

### Storage before use

- Use only properly rated test equipment and tools for the rated voltage and current of the product being tested.
- It is strongly suggested to wear rubber insulated gloves and rubber bottom shoes while handling the product.
- Do not wear any conductive items (such as jewelry) which could accidentally contact electric circuits.
- Faults, lightning, or switching transients can cause voltage surges in excess of the normal ratings.
- Internal component failure can cause excessive voltages.
- Stored or residual electricity in long wire could be hazardous.



## ROHS III Compliant

All our LED modules meet the Restrictions of Hazardous Substances (RoHS III)!

There has been a growing consensus that Lead Free Systems should increase for the safety of our environment. It is a very serious problem that lead and other harmful materials are being used in commercial and industrial products, causing more and more environmental problems. This has led to regulations such as RoHS (Restriction of the use of certain Hazardous Substances) from the EU and the Japan Ministry of Trade and Industry (MITI). All LED module makers providing products to these countries should comply with these restrictions. In order to meet the RoHS III regulation, Optoga is strictly implementing a ban on lead and other hazardous materials in its products. This is in compliance with our responsibilities as good corporate citizens.

### Design for Environment:

According to the EU-directive (RoHS III) the following substances must not be used in this product

- Lead (Pb)
- Mercury (Hg)
- Cadmium (Cd)
- Chromium VI (Cr<sup>6+</sup>)
- Polybrominated biphenyls PBB
- Polybrominated diphenyl ethers PBDE
- Bis(2-ethylhexyl) phthalate DEPH
- Butyl benzyl phthalate BBP
- Dibutyl phthalate DBP
- Diisobutyl phthalate DIBP



# Clara AC

Document no:  
n/a

Revision:  
1.3

Page:  
Page 19 of 20

Object:  
**Datasheet Clara AC.P.230.xx.zyy-NN.FF**

Author:  
SL

Date:  
2024-10-19

# Do you want to know more about benefits of OptoDrive LED?

Read more about OptoDrive at [www.optoga.com](http://www.optoga.com).

You can contact us via [info@optoga.com](mailto:info@optoga.com).

You can also call us on +46 (0)589 490 950.

## Optoga AB

Optoga was founded in November 2004 in Arboga, Sweden and has many years of experience in electronics design. The company develops and supplies LEDs and LED-module solutions for the lighting industry, vehicle manufacturers and electronics companies.

With the OptoDrive LED-module, Optoga has taken the initiative to replace strip lights, incandescent and halogen bulbs with LED-based sources.



Köpingsvägen 4 • SE-732 31 Arboga • SWEDEN

Tel +46 (0) 589 490 950

[info@optoga.com](mailto:info@optoga.com) • [www.optoga.com](http://www.optoga.com)

Copyright © 2017 Optoga AB. All rights reserved.